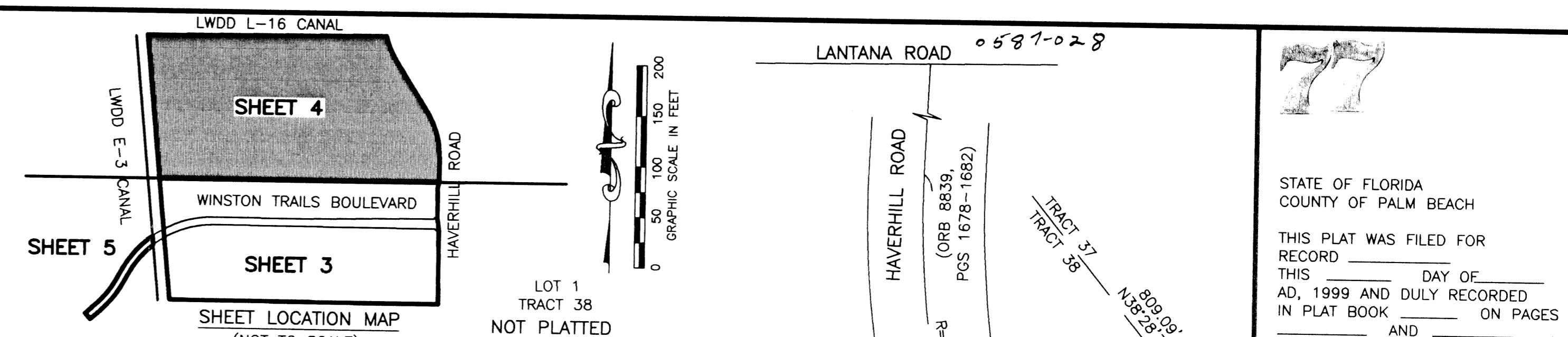


WINSTON TRAILS EAST

PART OF WINSTON TRAILS P.U.D.
SITUATE IN SECTION 2, TOWNSHIP 45 SOUTH, RANGE 42 EAST
PALM BEACH COUNTY, FLORIDA
MAY 1998 SHEET 4 OF 5

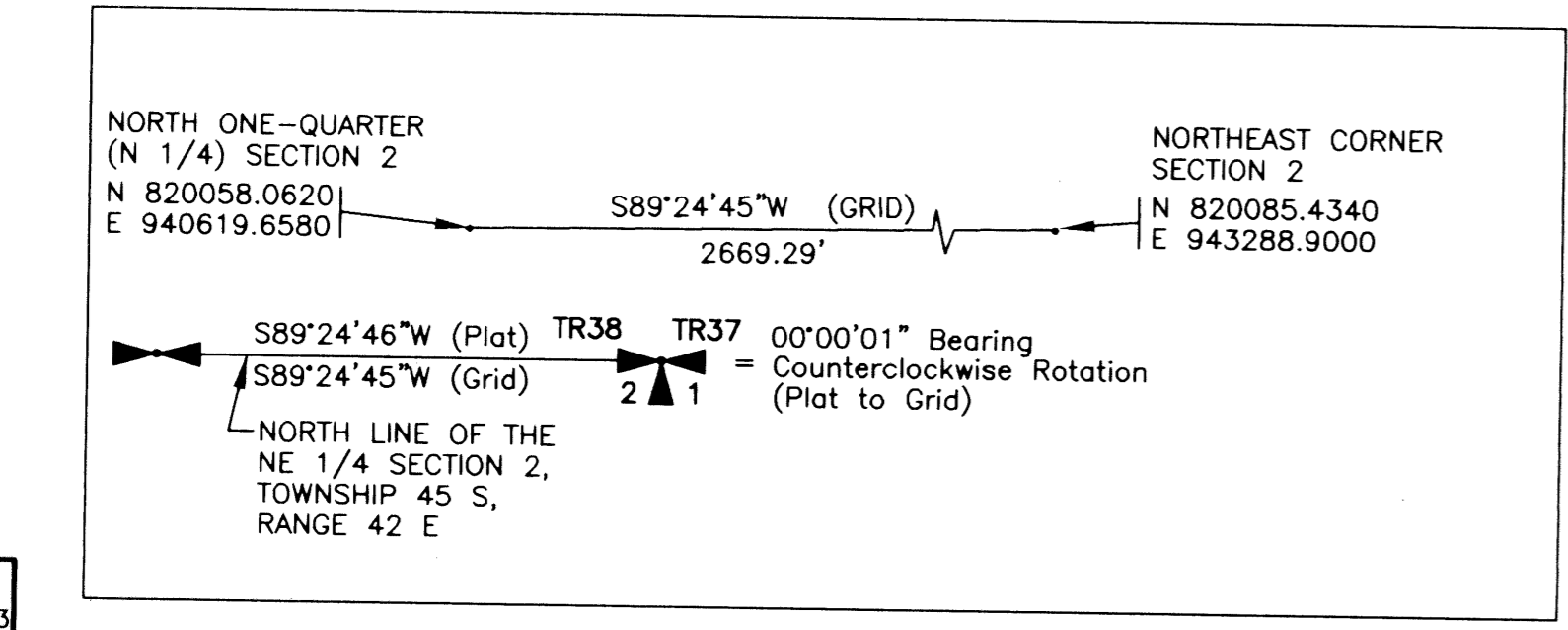
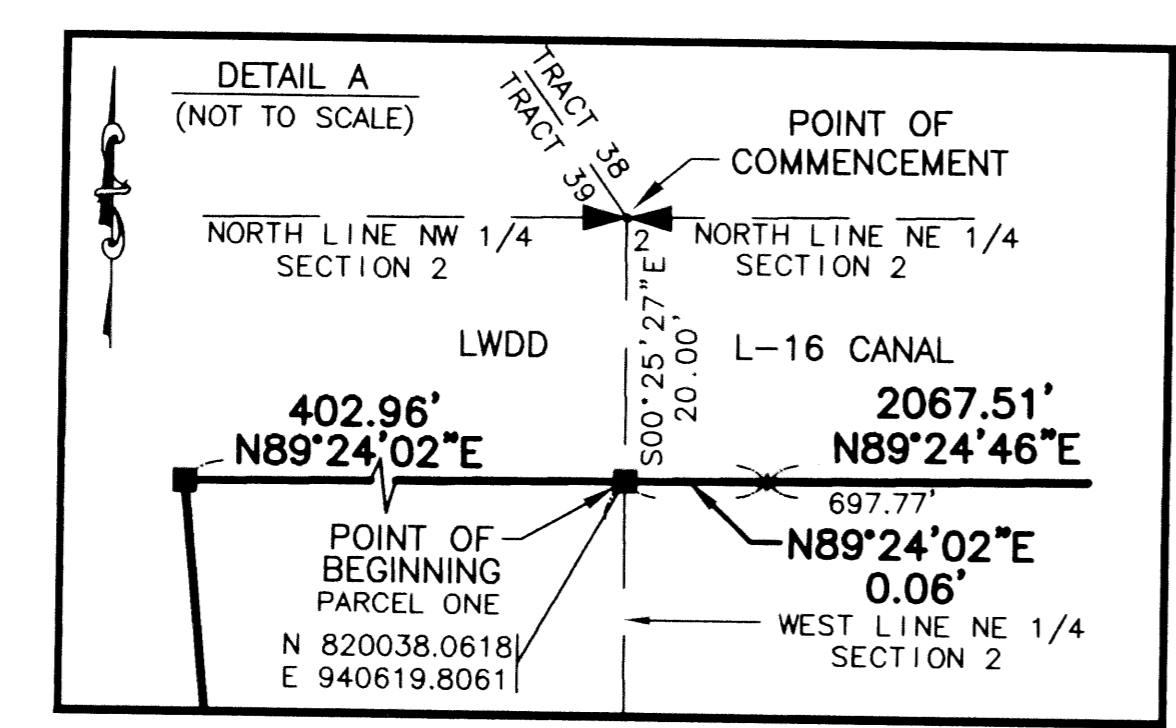
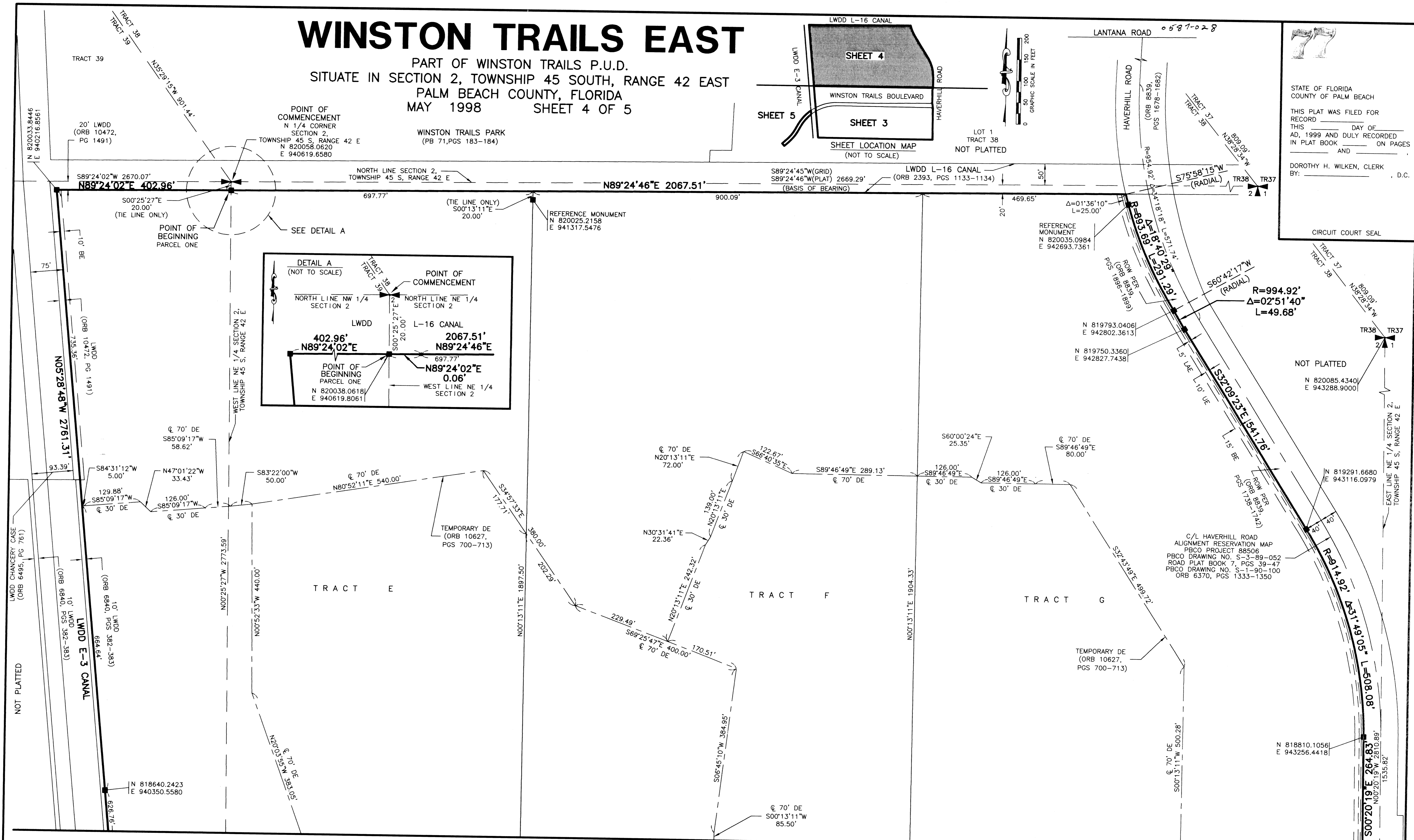


STATE OF FLORIDA
COUNTY OF PALM BEACH

THIS PLAT WAS FILED FOR RECORD _____ DAY OF _____ AD, 1999 AND DULY RECORDED IN PLAT BOOK _____ ON PAGES _____ AND _____

DOROTHY H. WILKEN, CLERK BY: _____, D.C.

CIRCUIT COURT SEAL



- LEGEND**
- L ARC LENGTH
 - BE BUFFER EASEMENT
 - Δ CENTRAL (DELTA) ANGLE
 - DE DRAINAGE EASEMENT
 - LAE LAKE WORTH DRAINAGE DISTRICT
 - ORB OFFICIAL RECORD BOOK
 - PB PLAT BOOK
 - PG(S) PAGE(S)
 - R RADIUS
 - ROW RIGHT-OF-WAY
 - UE UTILITY EASEMENT
 - ⊙ PERMANENT CONTROL POINT
 - SET PSM# 4763
 - 4x4 CONCRETE PERMANENT REFERENCE MONUMENT SET PSM# 4763
 - 4x4 CONCRETE PERMANENT REFERENCE MONUMENT FOUND PSM# 4763
 - ⊕ CENTERLINE

- NOTES:**
- THE COORDINATES SHOWN HEREON ARE STATE PLANE GRID COORDINATES ACCORDING TO THE TRANSVERSE MERCATOR PROJECTION OF THE FLORIDA EAST ZONE, N.A.D. 83, PER THE 1990 ADJUSTMENT.
 - THE LINEAR DIMENSIONS SHOWN HEREON ARE GROUND DISTANCES IN U.S. FEET AND DECIMAL PARTS THEREOF.
 - THE GROUND DISTANCE TO GRID DISTANCE SCALE FACTOR IS 1.0000337 (GROUND DISTANCE X SCALE FACTOR = GRID DISTANCE).

SCALE:

| |
|---------------------------|
| 1" = 100' |
| P.A. NO.: 97012.00 |
| DATE: MAY 1998 |
| DRAWING NO.: 45-42-02-102 |

MOCK • ROOS
ENGINEERS • SURVEYORS • PLANNERS

5720 Corporate Way, West Palm Beach, Florida 33407
(561) 683-3113, fax 478-7248

WINSTON TRAILS EAST
PART OF WINSTON TRAILS P.U.D.
SITUATE IN SECTION 2, TOWNSHIP 45 SOUTH,
RANGE 42 EAST
PALM BEACH COUNTY, FLORIDA

WINSTON TRAILS EAST
PAGE 77
BOOK 85
FLOOD MAP # 175B
ZONING RS1E
QUAD # 34
SEE 87-110
TAG 478
PLAT NAME Winston Trails East

REV.: 04-02-99
CAD FILE: MUSSWTEP/WTEPR03